

CLT SERIES ~ Communication-Site-on-Light Truck (COLT)

Representative ITS COLT Configuration

- » **Primary and Multi-terrain Transport Capabilities and Deployment Configurations**
- » **Ford F750, International or Equivalent Light/Medium Duty Diesel Truck, Typical 29,000lb–36,000lb Capacity GVWR**
- » **Environmentally Controlled, Steel Clad Equipment/Personnel Shelters to 18'0" (5.5m)L x 8'0" (2.44m)W x 9'6" (2.9m)H**
- » **Single or Tandem Pneumatic Masts; Typical to 60'0" (18m) Elevation (Self-supporting); to 1,200lb (544kg) Payload**
- » **Power Generation, Auxiliary Fuel Tank, ATS, UPS, Antenna/Satellite Platforms, Etc.; Full Shelter Customization**



Model Series Summary:

CLT Series Communication-Site-on-Light Truck (COLT) is custom designed and accessorized by ITS pursuant to individual client specifications. Most common configurations include the following:

Pneumatic Mast ~ Approximate 60'0" (18m) Elevation:

- Self-supporting mast with locking collars for extended use deployments
- Constructed of high strength heat-treated aluminum tubes and collars with low friction synthetic bearings
- Two full-length external keys on mast sections; collars have matching machined keyways that maintain directional azimuth
- The bumpers between sections is designed to reduce shock on extension and retraction
- Exterior aluminum surfaces are anodized and sealed; fasteners are plated steel for corrosion resistance
- Mast is secured to both truck fume and shelter wall
- Mast can either use the truck's air system for primary operation or an auxiliary tank

• Payload Capacity	~ Typ. To 1,200 lbs (544kg)	• No. Sections	~ Typ. To 8
• Extended Height	~ Typ. To 60' (18m)	• Collar Type	~ Locking T-handle
• Nested Height	~ Typ. To 11'3" (3.44m)	• Tube Diameter	~ To 13" (33cm)
• Mast Weight	~ 330lbs-800 lbs. (150kg-363kg)	• Operating Pressure	~ 35 PSIG (2.4 bar)
• Guying Required	~ Optional		

CLT SERIES ~ Communication-Site-on-Light Truck (COLT)

Representative ITS COLT Configuration

Representative Configuration: Ford F-750 XLT Vehicle Profile – General Specifications & Capacities

Engine: Cummins (6.7L) ISB 280 HP @ 2400 RPM, Governed @ 2600 RPM
Transmission: Allison 3000 6-Speed Automatic, RDS Series On-Off
Rear Axle Ratio: 6.17 **Brakes:** Air Brakes – Straight Truck **GVWR:** Typ. 33,000lb (14,966kg)

Output:	280 hp @ 2,400 rpm	Torque:	660 lb-ft @ 1,600 rpm
1 st gear ratio:	3.490	2 nd gear ratio:	1.860
3 rd gear ratio:	1.410	4 th gear ratio:	1.000
5 th gear ratio:	0.750	6 th gear ratio:	0.650
Reverse ratio:	5.030	Curb weight:	10,064 lbs (4,564kg)
Payload:	21,985 lbs (9,970kg)	Front curb Wt:	6,396 lbs (2,901kg)
Rear Curb Wt:	3,668 lbs (1,663kg)	Front Axle Capacity:	12,000 lbs (5,442kg)
Rear Axle Capacity:	21,000 lbs (9,524kg)	Front Spring Rating:	12,000 lbs (5,442kg)
Rear Spring Rating:	23,500 lbs (10,657kg)	Front Tire/Wheel Capacity:	13,220 lbs (5,995kg)
Rear Tire/Wheel Capacity:	24,020 lbs (10,893kg)	Length:	356" (9m)
Body Width:	96.7" (2.95m)	Body Height:	94.7" (2.4m)
Wheelbase:	230" (5.84m)	Cab to Axle:	156" (3.96m)
Axle to End Frame:	87" (221cm)	Front Frame Height Loaded:	34.9" (88.6cm)
Rear Frame Height Loaded:	36.2" (92cm)		

Powertrain:

Cummins 6.7L I-6 OHV diesel injection 24 valve intercooled turbo diesel engine • 130 amp alternator • 1,250 amp (total) 93 amp hours (Ah) (total) battery dual batteries located rear left • 6-speed electronic automatic transmission with overdrive, lock-up • Rear-wheel drive • 6.17 axle ratio, single speed drive axle • Aluminumized steel exhaust • Heated fuel/water separator • Transmission PTO provision • Construction transmission vocation • Standard rear differential • Right mounted horizontal muffler • Right mounted horizontal tailpipe • 18.7cfm capacity air compressor system with air dryer, manual moisture ejector • 65.0 gallon D-style left front fuel tank

Steering and Suspension:

Hydraulic power-assist re-circulating ball steering • Air brakes • Non-independent front suspension • Front leaf suspension • Front tapered leaf springs • Rigid rear axle • Rear leaf suspension • Rear multi-leaf springs • Front and rear 22.5" x 8.25" • 11.0R22.5 AS front tires • Rear tires • Rubber auxiliary rear springs • Front and rear white steel disc wheels with 10 wheel studs

Safety:

4-wheel anti-lock braking system

Comfort and Interior:

Air conditioning • AM/FM stereo, clock, seek-scan, in-dash mounted single CD, 4 speakers, fixed antenna • Cruise control • Power door locks • 2 12V DC power outlets, ashtray, front lighter elements, backup alarm, dual electric horn • Analog instrumentation display includes tachometer, oil pressure gauge, engine temperature gauge, voltmeter gauge, primary air pressure gauge, trip odometer • Warning indicators include battery, lights on, key, service interval, brake fluid, transmission fluid temp • Steering wheel with tilt adjustment • Power front windows with light tint • Variable intermittent front windshield wipers • Passenger side vanity mirror • Interior lights include dome light with delay • Glove box, front cup-holder, dashboard storage, driver and passenger door bins • Air compressor • Automatic gearshift dashboard buttons

Seating and Interior:

Seating capacity of 3 • Vinyl faced front seats with carpet back material • Vinyl door trim insert with carpet lower, full cloth headliner, full vinyl/rubber floor covering, cab-back insulator • 4-way driver and passenger seats with folding back, fore/aft • Driver bucket seat with high back, air suspension • Passenger two person bench seat with mid back • Driver fixed headrest

Exterior Features:

Front splash guards, composite/galvanized steel body material, side steps • Black side window moldings, black front windshield molding, black rear window molding • Black door handles • Chrome grille • 2 doors • Driver and passenger manual stainless steel convex spotter outside mirrors • Front chrome bumper with straight ends, with front tow hooks • Sealed beam halogen headlamps • Additional exterior lights include cab clearance lights • Clearcoat monotone paint • Hood mounted grille

General Assumptions:

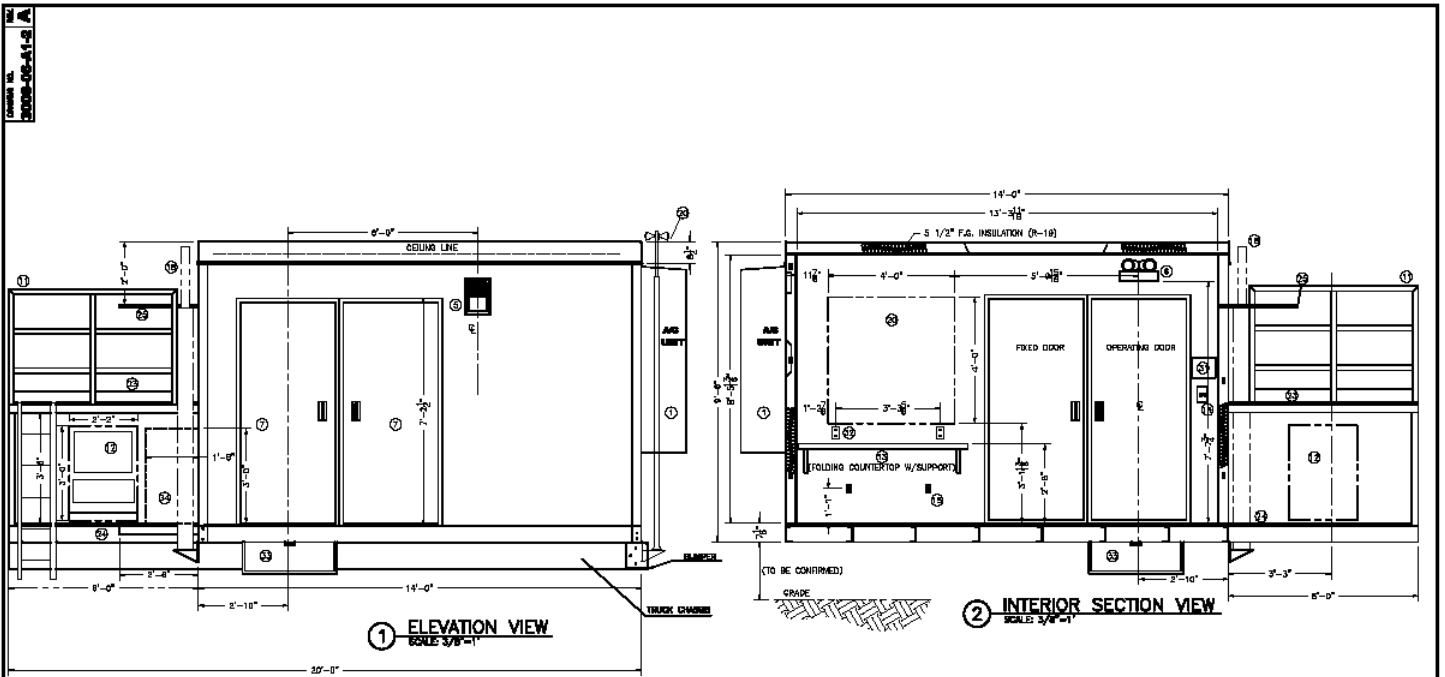
- Shelter Weight: ±5,800 lbs; Interior Shelter Payload: Customer Equipment Payload ~ Maximum to ±8,650 lbs
- Chassis Platform Payload (supports pneumatic mast system(s)): Approx. Dims = 3'-4" x 8'; payload to ±1,500 lbs
- Truck performance analyzed for the towing of up to a 7,500 lb trailer

CLT SERIES ~ Communication-Site-on-Light Truck (COLT)

Representative ITS COLT Configuration

CLT Series ~ General Steel Clad Equipment Shelter Description:

Typical Shelter Dimensions	A variety of custom shelter configurations range in size from 8'0" (2.44m) to 18" (5.5m) Long x 8'0" (2.44m) Wide x 9'6" (2.92m) High (Outside Dimensions). Shelters may be configured per client specifications, DOT and environmental requirement
Typical Shelter Weight	From 2,500lbs (1,138kg) to 7,500lbs (3,401kg) prior to installation of ITS and/or customer equipment
Standard Skid Construction	Reinforced, heavy-duty perimeter steel channel skid and cross members on 24" (61cm) centers. Members to be sized according to floor load (300 lbs. PSF). All welded construction. Skid to be painted with an enamel coat after fabrication. All steel to be A-36 grade. Floor to be insulated with 3 1/2" fiberglass batt over galvanized belly pan.
Standard Shelter Floor Construction	A sub floor 1-1/8" Sturdi-Floor, T&G exterior grade plywood. Plywood to be secured to the steel floor framing using self-drilling cadmium plated screws. Floor covering will be 1/8" x 12" x 12" (.32cm x 30.5cm x 30.5cm) commercial grade vinyl floor tile. Floor loading designed for 300 lbs PSF.
Standard Shelter Wall Construction	All exterior wall sections will be thru-bolted to 12 gauge galvanized and painted steel exterior angles and 16 gauge painted steel interior angles, using cadmium plated steel nuts, bolts and washers. Roof connection to exterior walls will be thru-bolted using the 3/16" galvanized steel roof skirt and cadmium plated fasteners. Wall framing will be 1 5/8" x 3 5/8" 18 gauge galvanized steel studs at 16" centers. Exterior finish will be 20 gauge painted galvanized sheet steel, pop riveted to the metal studs with stainless steel rivets. Interior finish will be fire retardant embossed FRP, white, laminated to 1/2" (1.3cm) plywood. Insulation will be 3 1/2" (8.9cm) fiberglass batt with vapor barrier, (R-11).
Standard Shelter Roof Treatment	Joists shall be 1 5/8"x 6", 18 gauge galvanized steel framing members on 16" (40.6cm) centers. The outside sheathing will be 1/2" (1.3cm) OSB board with an exterior finish of .045 EPDM rubber membrane. The interior ceiling finish will be .013 white embossed fire retardant FRP laminated to 1/2" plywood. Insulation shall be 5 1/2" (R-19) fiberglass batt with vapor barrier.
Standard Shelter Door Construction	Exterior doors will be 16 gauge insulated steel with heavy-duty stainless steel hinges, 12 gauge painted steel door frame, door closer, lockset, deadbolt, threshold, drip cap, and weather-stripping.
Standard Shelter Electrical	All wiring shall be surface mounted EMT. Interior devices such as switches and receptacles shall be installed in surface mounted boxes. All circuits shall be breaker protected. A service entrance shall be provided on the exterior of the shelter for connecting to the main electrical power supply. All electrical shall be installed in accordance with the National Electric Code.
Air Conditioning and Heating Systems	1 or 2 air conditioners; 1-ton (12,000 BTU) to 5-ton (60,000 BTU) capacity each, typical 3-5kW heat, wall mounted unit(s); tandem AC systems have lead lag controller. Standard configuration to include: thermostat, supply grill, return grill, low ambient fan control, adjustable time delay relay, low pressure by-pass, full length mounting brackets, rain hood, dry contact for remote on lockout, high and low pressure switches with lockout relay, 2" pleated filter, and internal disconnect ~ 230/208/1/60Hz
Partial List of Shelter Installed Accessories	<ul style="list-style-type: none"> • Surface and/or recessed mounted sodium exterior lights with photocell • Ground bar kit, 1/4" x 4" x 20", exterior and/or interior mounted • Halo ground kit with accessories, #2 solid tinned copper drops • Wave guide entry ~ 2 to 8 ports • Exterior shelter receptacle, 120V, GFI • 200 Amp/240/120V/60Hz/1PH central power panel, 32-42 breaker spaces and disconnect • 2" LB connectors for incoming power, optional generator • Shelter roof access ladder • Multiple duplex and/or four-plex receptacles, 20 amps each • Telco board, 2'x4'x3/4" with FRP on one side • Alarm terminal strip with open door, high/low temperature, smoke/fire alarm • Emergency lighting with battery backup • Fluorescent lights, 2-tube – 4' each with RFI filter and wire guard • Set of exterior steps • Automatic or manual transfer switch • UPS and surge suppression systems, and much more • Counter Top, Fold down with supports, 18" W, computer slots • Truck leveling jacks, 15,000 lb static/12,000 lb lift capacity • CAT 5 terminals • Landing platforms, 1" galvanized or painted grating, 6' x 8' • Microwave dish and/or antenna platforms, steel grating with support



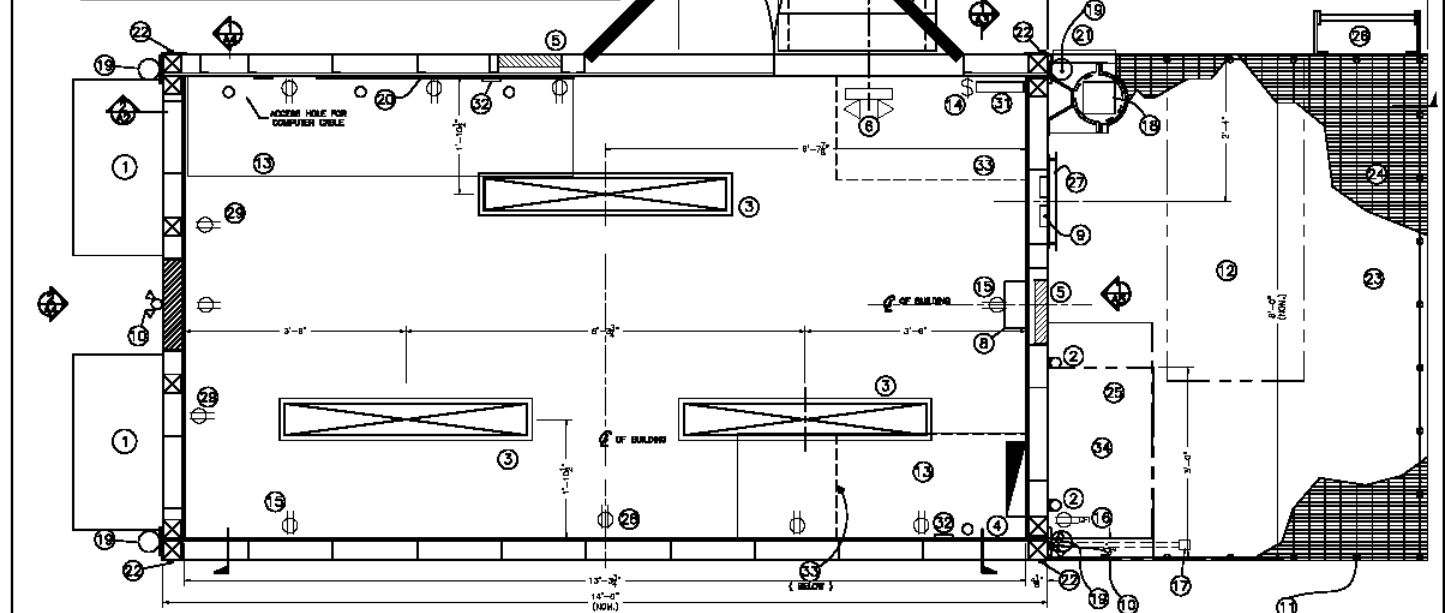
A	ISSUED FOR CUSTOMER REVIEW	05.09.06	M.J.B.
NO.	REVISION	DATE	BY / APPR.

EQUIPMENT SHELTER
CROSS SECTION AND ELEVATION
FOR
INTELCO



DATE BY	DATE	SCALE
JAWWETT SULLMAN	05.09.06	3/8" = 1'
DESIGNED BY	SHEET	CLASS NUMBER
DENNIS FREELIS	1 OF 1	3000-05
DRAWING TYPE	PROVISION	REV. NO.
METAL STUD	-	A
DATE SUBMITTED	ISSUED BY	ISSUED DATE
PROPOSAL	-	3006-06-A1-2

ITEM QTY.	DESCRIPTION	ITEM QTY.	DESCRIPTION
1	12 TON WALL MOUNT AIR CONDITIONER w/3 KW HEAT	1	TELEPHONE MOUNT
2	12\"/>		



A	ISSUED FOR CUSTOMER REVIEW	05.09.06	M.J.B.
NO.	REVISION	DATE	BY / APPR.

8'x14' EQUIPMENT SHELTER
FLOOR PLAN/ELECTRICAL LAYOUT
FOR
INTELCO



DATE BY	DATE	SCALE
JAWWETT SULLMAN	05.09.06	3/4" = 1'
DESIGNED BY	SHEET	CLASS NUMBER
DENNIS FREELIS	1 OF 1	3000-05
DRAWING TYPE	PROVISION	REV. NO.
METAL STUD	-	A
DATE SUBMITTED	ISSUED BY	ISSUED DATE
PROPOSAL	-	3006-06-A1-1

Representative Will-Burt Company Pneumatic Masts

